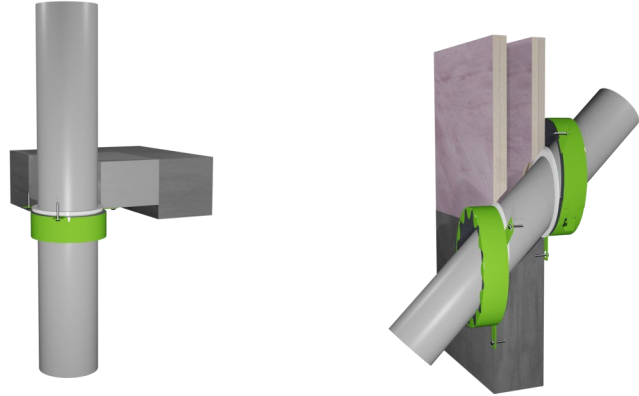


# PipeBloc® PCP Fire Resistance Pipe Collar



### General description

PipeBloc PCP is a fire resistant prefabricated pipe collar consisting of a metal casing and an intumescent insert for penetration sealing applications. PipeBloc PCP is designed to provide a high volume expansion and pressure seal during a fire to combustible pipes that pass through floor and wall service openings.

### Packaging

- Boxed with 2x PipeBloc PCPs in each box

### Application and use

- To reinstate fire resistance through walls and floors where combustible services penetrate the substrate
- Used in conjunction with FSi Promat products such as Stopseal Batt, Silverseal Compound and Pyrocoustic Sealant
- Shelf life - 10 Years

Product Details	
Material	Powder coated steel shell with intumescent insert
Weight	0.11kg - 3.15kg (depending on PipeBloc PCP size)
Finish / Colour	Green shell, black inner
PipeBloc PCP Depth	32mm – 110mm = 30mm 125mm – 160mm = 40mm
Chemical properties/ COSHH statement	This product is an article as defined in article 3 of regulation (EC) No 1907/2006 (REACH). It contains no substances which are intended to be released from the article under normal or reasonably foreseeable conditions of use. A safety data sheet following article 31 of the same regulation is not needed to bring the product to the market, to transport or to use it. For safe use follow the instructions given in this product data sheet. Based on our current knowledge, this product does not contain SVHC (substances of very high concern) as listed in Annex XIV of the REACH regulation or on the candidate list published by the European Chemicals Agency in concentrations above 0.1 % (w/w)
Size/dimensions (product & installation spacial requirement)	For penetrations seals, opening size and penetration service covered as per requirements of UL-EU-00942-CPR
Working life	10 Years (ETA-20/1009)
Durability	Type X: Intended for use in conditions exposed to weathering.

## Technical Data Sheet

### Product Certification / Approvals

Approval	Reference number
ETA	ETA-20-1009
CE Mark	2531-CPR-CX010252
UL-EU	UL-EU-00942-CPR
UAE CoC	ENCG.R38118
UKCA	0843-CPR-1153

### Memberships

ASFP

BASA

### Testing / Classification

Standard	Description	Result
BS EN 1366-3	Fire resistance tests for service installations. Penetration seals	See UL-EU-00942-CPR for fire resistance performance
ASTM E84	Standard Test Method for Surface Burning Characteristics of Building Materials	Contact <a href="mailto:technical.fsi.uk@etexgroup.com">technical.fsi.uk@etexgroup.com</a> for details
BS EN 13501-2	Fire classification of construction products and building elements	See UL-EU-00942-CPR for fire resistance performance
AS1530.4:2014	Methods for fire tests on building materials, components and structures Fire-resistance tests for elements of construction	Contact <a href="mailto:technical.fsi.uk@etexgroup.com">technical.fsi.uk@etexgroup.com</a> for details

## Technical Data Sheet

### Installation & Operation

FSi Ltd. recommend installation of FSi Ltd. products is carried out by 3rd party certified installers.

Adequate space and accessibility should be provided for cutting and shaping the batts, applying and tooling the sealant.

Simple tools and equipment may be required, depending on your aperture: • Tape measure • Cartridge gun • Marker or pencil • Straight edge • Masking tape • All purpose saw • Pad saw • Pallet knife or pointing trowel • Drill or screw driver

Clean substrate and service ensuring they are clean, dry, sound and homogeneous, free from oils, grease, dust and loose particles. The product does not require a primer on most common surfaces.

For larger openings, the aperture will need to be filled with Stopseal Batt before PipeBloc PCP is installed. See TDS001 for installation and UL-EU-00942-CPR for tested systems.

For smaller openings / annular space apply Pyrocoustic Sealant at  $\geq 10$ mm depth. Use pointing tool to smooth off.

Open PipeBloc PCP and wrap around the service, close the PipeBloc PCP firmly and push against wall/ Batt. Fix PipeBloc PCP using appropriate fire resistant fixings in line with test systems shown in UL-EU-00942-CPR.

Apply the second PipeBloc PCP to the other side of the wall. Floor systems require PipeBloc PCP from the underside only.

Clean all tools and application equipment with water immediately after use.

Competence records should be kept for all individuals installing this product (s). Installations should be suitably recorded and logged.

### Maintenance

Recorded inspection should be conducted in line with the maintenance and inspection schedule defined for the building/project.

These inspections should be completed and recorded by suitably competent individuals at intervals outlined in the operation and maintenance manual relevant to the building.

Ensure Safe Access and Egress when carrying out maintenance or inspection.

Where product (s) is damaged or tampered, new product should be installed in line with installation guidance.

### Handling & Storage

Store in a well-ventilated, dry, cool environment. Recommended temp ranges +5°C - +35°C, however can be -20 °C min. / +70 °C max. Protect against exposure to direct sunlight. Always ensure that safe manual handling procedures are followed at all times.

For information and advice on the safe handling, storage and disposal of chemical products, please refer to the most recent Safety Data Sheet (SDS) available at [www.promat.com/en-gb](http://www.promat.com/en-gb)

## Technical Data Sheet

### Disposal

The PipeBloc PCP is considered a complex article. Therefore, considerations on disposal should be made per component.

**Powder coated steel housing** The steel shell of the PipeBloc PCP is widely recyclable. It can be recycled at a licensed waste collection facility in accordance with the collectors' sorting instructions. The powder coating is not classified hazardous.

European Waste Catalogue code: **08 02 01**  
(Wastes from MFSU of other coatings (including ceramic materials); waste coating powders)

European Waste Catalogue code: **17 04 05**  
(Metals (including their alloys); iron and steel)

### Intumescent materials

The intumescent material used within the PipeBloc PCP system is not classified as hazardous, it is, however, non-recyclable.

European Waste Catalogue code: **17 09 04**  
(CONSTRUCTION AND DEMOLITION WASTES (INCLUDING EXCAVATED SOIL FROM CONTAMINATED SITES); other construction and demolition wastes; mixed construction and demolition wastes other than those mentioned in 17 09 01, 17 09 02 and 17 09 03.)

Disposal of waste intumescent material must be done according to official regulations and in accordance with a licensed collector's sorting instructions.

You must classify your own waste, the information given above is guidance only. Waste must be classified on a case-by-case basis.

### Legal Notes

FSi Ltd. products are manufactured to rigid standards of quality. Any product which has been applied in accordance with FSi Ltd.'s written instructions and in any application recommended by FSi Ltd., but which is proved to be defective in product quality, will be replaced free of charge. No liability can be accepted for the information provided in this document although it is published in good faith and believed to be correct at time of issue. Any drawings provided are for illustrative purposes only. FSi Ltd. reserves the right to alter product specifications without prior notice, in line with our Company policy of continuous development and improvement. Changes due to new findings are possible, errors and misprints are not excluded. No liability whatsoever will be accepted for any loss, damage or injury arising from the use of the information given. FSi Ltd. have no control over the methods of installation, competence of operatives or suitability of site conditions, no warranties, expressed or implied, are intended to be given as to the actual performance of the product/system mentioned within this document.

## Technical Data Sheet

SKU CODES			
Item Code	Description	Size (dia.)	Box Qty
PCP32FP	PipeBloc® PCP 32mm	32mm	2
PCP40FP	PipeBloc® PCP 40mm	40mm	2
PCP55FP	PipeBloc® PCP 55mm	55mm	2
PCP63FP	PipeBloc® PCP 63mm	63mm	2
PCP75FP	PipeBloc® PCP 75mm	75mm	2
PCP82FP	PipeBloc® PCP 82mm	82mm	2
PCP90FP	PipeBloc® PCP 90mm	90mm	2
PCP110FP	PipeBloc® PCP 110mm	110mm	2
PCP125FP	PipeBloc® PCP 125mm	125mm	2
PCP140FP	PipeBloc® PCP 140mm	140mm	2
PCP160FP	PipeBloc® PCP 160mm	160mm	2
PCP200FP	PipeBloc® PCP 200mm	200mm	2
PCP250FP	PipeBloc® PCP 250mm	250mm	2

**FSi Limited**

Westminster Industrial Estate  
 Tamworth Road  
 Measham  
 DE12 7DS  
 Tel: +44 (0)1530 515130  
 Email: [technical.fsi.uk@etexgroup.com](mailto:technical.fsi.uk@etexgroup.com)  
 Web: [www.promat.com/en-gb](http://www.promat.com/en-gb)